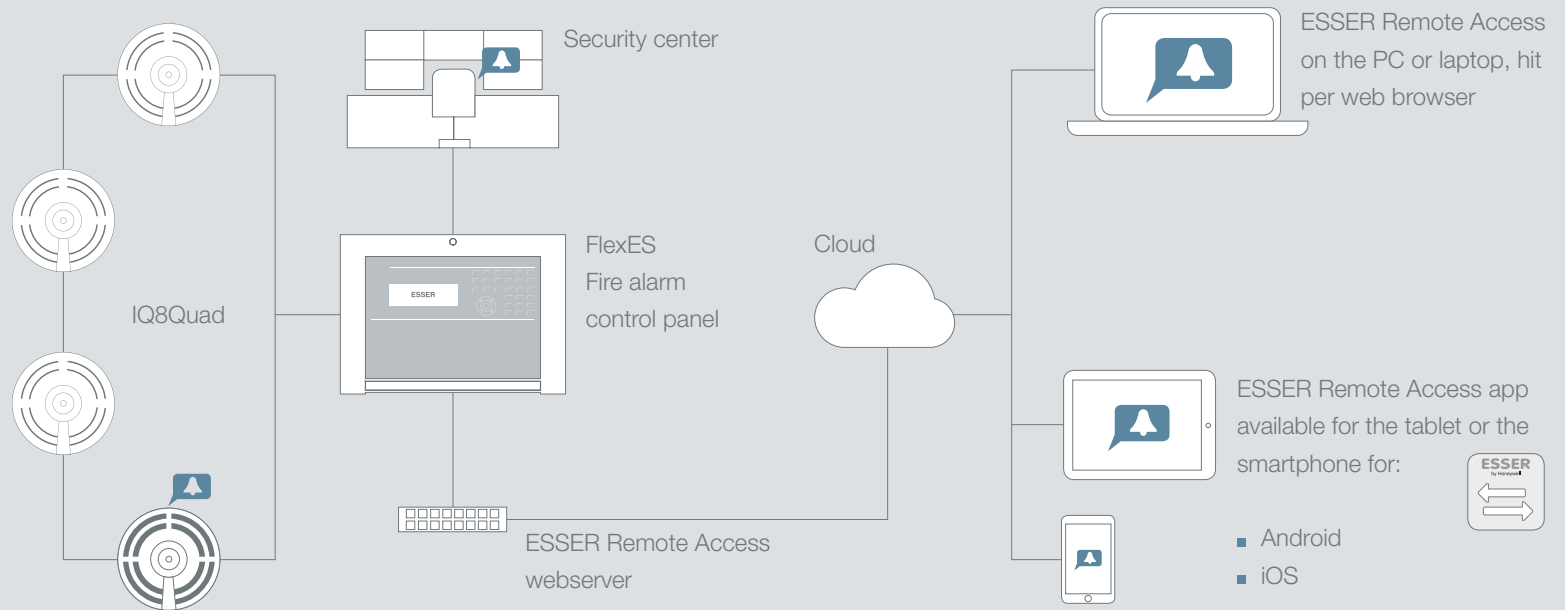




Smart Solutions for the Supervision
and Service of Fire Alarm Systems.

ESSER Remote Access

ESSER Remote Access Makes Your Security Center Mobile.



When a fire alarm sounds, that is only the first piece of information. You don't yet know which alarm was triggered and where. A glance at the display in the security center can tell you that, but this requires you to be on site.

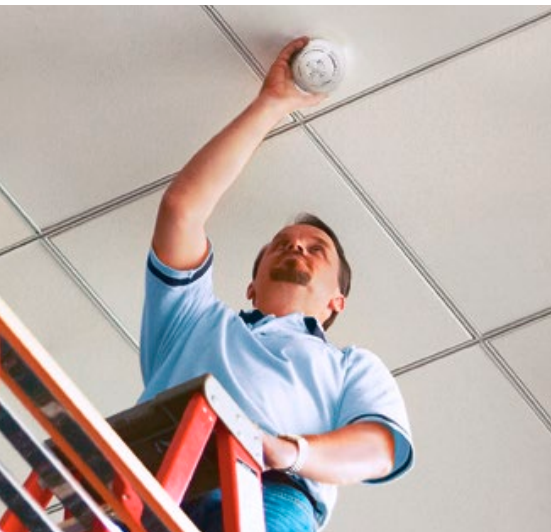
With the ESSER Remote Access app, it works whether you are on the road or at the office. With an intuitive app, the system uploads the status messages of each individual alarm to your smartphone, tablet, laptop, or PC.

Makes Installation and Service Easier

The mobile status display of the fire alarm center supports the technician when service or regular maintenance is needed.

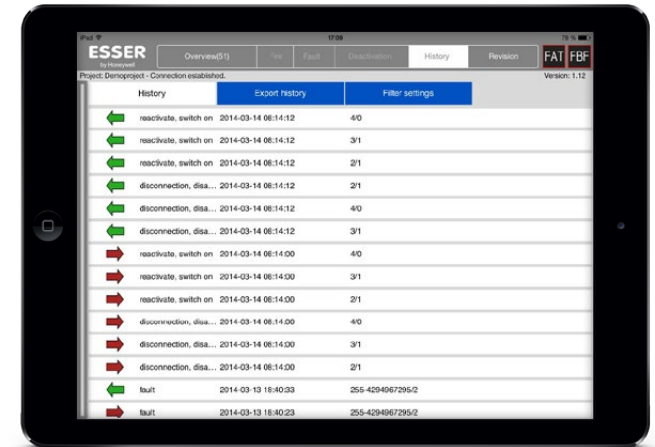
- During **installation** of the alarms, the incoming messages can be checked on line. One person is usually sufficient for the installation.

- ESSER Remote Access helps during regular **maintenance** of the alarm and the system. The incoming alarms are shown live in the app.
- If the fire alarm center experiences **malfunction**, the technician can remotely determine the kind of malfunction and pinpoint the affected components. This way, the appropriate spare parts can be brought along, which saves time and, therefore, money.

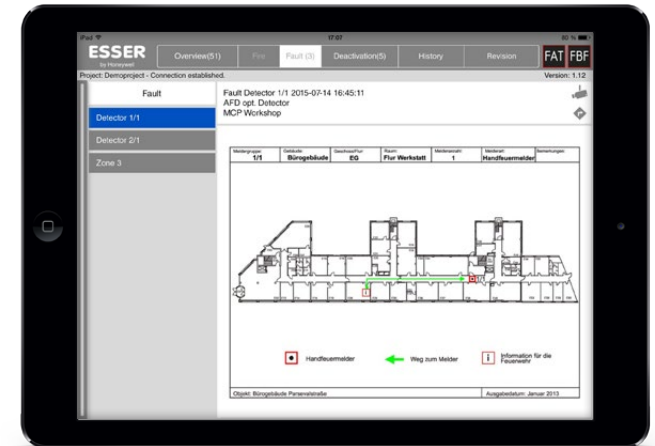


Safety included

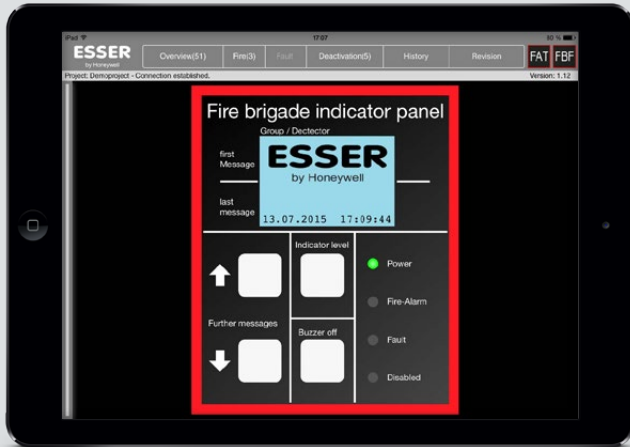
The ESSER Remote Access app is designed for maximum safety. It visualizes all status messages of the fire alarm center, but cannot change the settings or silence the alarm.



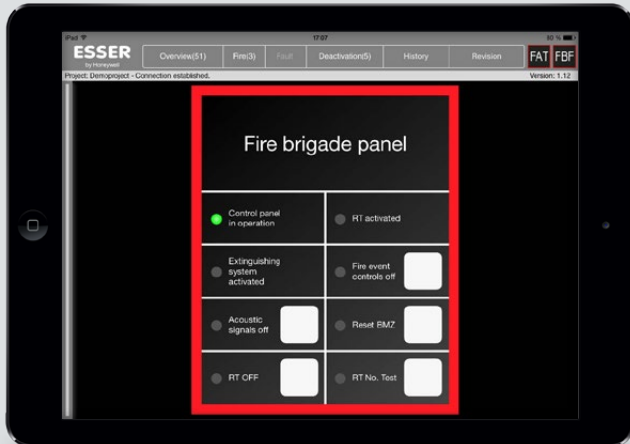
Maintenance protocol for export according to DIN 14675



Orientation assistance is available in the form of building layout display or routing cards.



Standardized user interface in the form of a fire department display panel



User interface of the fire department's control panel

Faster Information for Firefighters

If a device is equipped with ESSER Remote Access, the responsible fire department can also have access to the information provided. The advantages are obvious:

- Further information, such as routing cards and, if necessary, photos or videos can be accessed and facilitate access to the building.

- The alarm data is displayed on a mobile terminal via the web interface.
- On the way to the site, the technician can establish already which fire alarm has been triggered. That eliminates the need for searching in the building, and thus saves time. You can also assess in advance whether special equipment or reinforcement is necessary.



Novar GmbH a Honeywell Company

Dieselstraße 2
41469 Neuss
Phone: +49 2137 17-600
Fax: +49 2137 17-286
www.esser-systems.com
info@esser-systems.com

Part No.D800034.G0
August 2015
Subject to technical change.
© 2015 Honeywell International Inc.

ESSER
by Honeywell